

Physical and Chemical Changes

- On your desk, place the “**Physical Change**” card to your left and the “**Chemical Change**” card to your right.
- Using what you know about physical and chemical changes, place each card into the correct category.
- Record your data in the chart below.



Data Table: Physical vs. Chemical Changes

Physical Change	Chemical Change

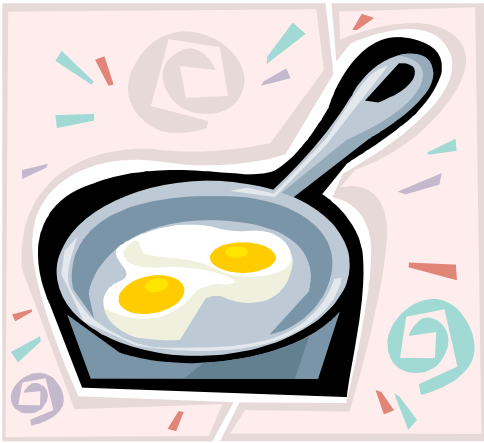
Analysis:

1. Were there any cards you had trouble classifying? Why/Why not?
2. Give an example of a physical change that was not listed above.
3. Give an example of a chemical change that was not listed above.

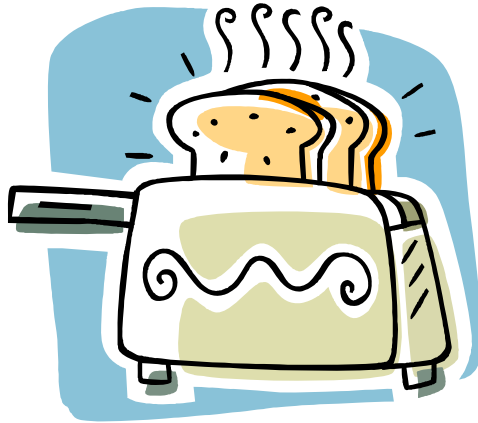
Conclusion: 2-3 complete sentences on what you learned.

Cut along dotted lines and paste into lab journal





Frying eggs



Toast



Cracking eggs



Slicing Bread



Lighting a Match



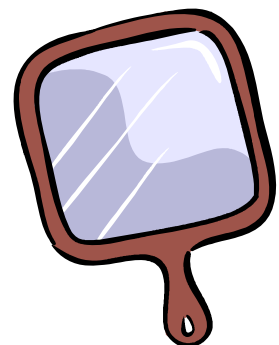
Roasting Marshmallows



Rusty Nails



Ice Melting



Glass Breaking



Boiling Water



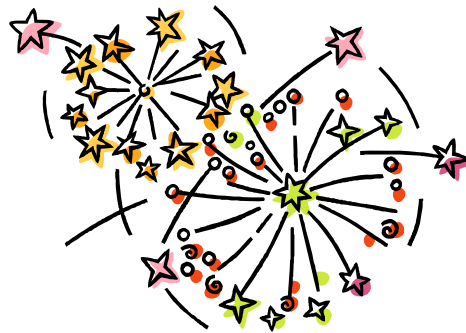
Fresh Lemonade



Baking a Cake



Mowing the Lawn



Fireworks



Digesting Food

Physical Change

Chemical Change